

STONEBRIDGE

BEING A REDIVISION OF PARCEL A OF CSM NO. 98 AND CSM NO. 421 AND A PART OF THE SW AND SE 1/4 OF THE NW 1/4 OF SECTION 25, TOWNSHIP 5 NORTH, RANGE 20 EAST, IN THE CITY OF MUSKEGO, WAUKESHA COUNTY, WISCONSIN.

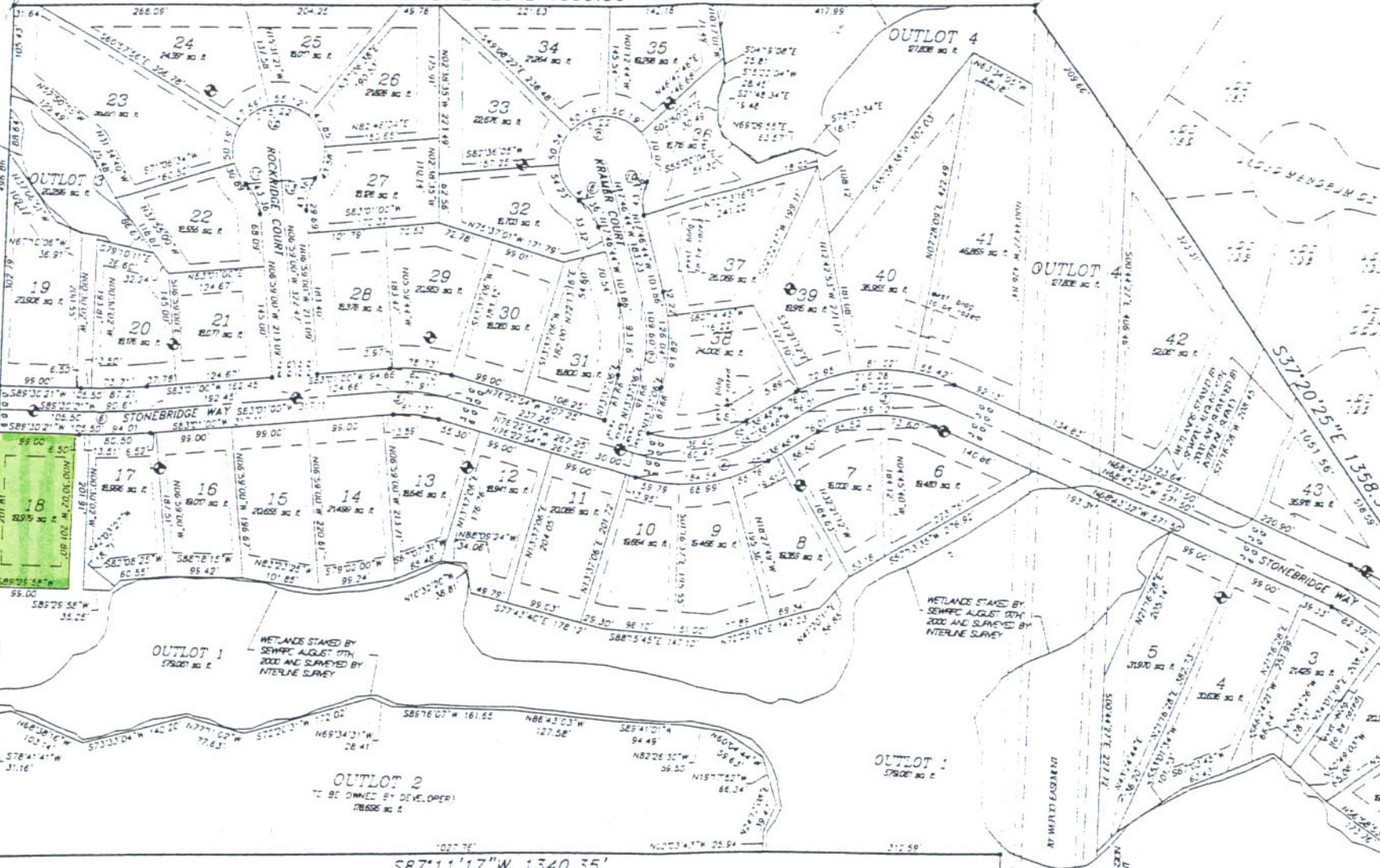
MUSKEGO LAKES CORP
UNPLATTED LOTS

METLANDS STAKED BY SEWAPC AUGUST 17TH 2000 AND SURVEYED BY INTERLINE SURVEY

500°44'27"E
7.88'

N87°21'25"E 1335.56'

CURVE	LE
1	1.13
2	2.27
3	3.41
4	4.54
5	5.68
6	6.82
7	7.96
8	9.10
9	10.24
10	11.38
11	12.52
12	13.66
13	14.80



5/16/06 CONC MONUMENT
W/ BRASS CAP
NW CORNER OF NW 1/4
OF SECTION 25, T. 5 N. R. 20 E
N = 320204
E = 2581645

METLANDS STAKED BY SEWAPC AUGUST 17TH 2000 AND SURVEYED BY INTERLINE SURVEY

WEST LINE OF THE
NW 1/4 OF SEC 25, S. 20
N 00°30'02" W 2673.07'
N00°30'02"W 1108.49'

Certified December 16th 2005
R. M. P. O
Department of Administration



5/16/06 CONC MONUMENT
W/ BRASS CAP
SW CORNER OF NW 1/4
OF SECTION 25, T. 5 N. R. 20 E
N = 320204
E = 2581645

SOUTH LINE OF THE
NW 1/4 OF SEC 25-5-20

THOSE AREAS OF LAND NOT SHOWN

S87°09'21"W 872.76'